



Thermal printer suitable for multi-row packaging machine

The multi-row intermittent type thermal printer "MTP3000B" is an intermittent thermal printer designed to be able to print on multiple locations with one machine for multi-row packaging machines. Ideal for incorporating multi-row packaging machines such as deep draw packaging machines.

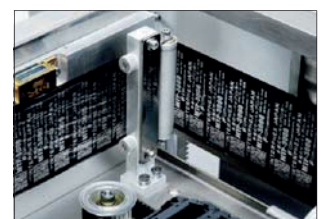
Thin design for easy installation

The printer body has a thin design, which reduces the installation space.



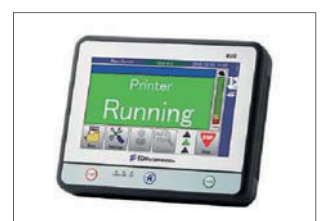
Efficiently consume the thermal ribbon

Precise ribbon feed control for each print enables efficient consumption of thermal ribbons. The ribbon feed amount can be set in 1-dot units and is automatically calculated according to the print size.



Color touch panel controller "EUI2"

The operation interface uses a color touch panel controller "EUI2" equipped with a 5.7-inch TFT liquid crystal. More comfortable operation has become possible.



SPECIFICATION

Model	MTP3000B
Type	Multi-row intermittent type
Printing method	Thermal transfer
Printing resolution	300 dpi (12 dots / mm)
Maximum printing speed	20 m / min (333 mm / sec) (9 steps variable)
Speed between pitches	625 mm / sec
Head return speed	625 mm / sec
Ribbon feed speed	1000mm / sec
Location unit moving speed	135 mm / sec
Maximum printing area	53mm (W) x 100mm (L)
Font size	24-96 dots (24 species / font)
Print extended function	Calendar function / Offset date / Time / Numbering function / Shift code / Custom code
Bar code	EAN8 / EAN13 / ITF / CODE39 / CODE128 / GS1 -128 / GS1-Data Bar
Two-dimensional code	QR code / micro QR code
Data memory	SD card
Thermal ribbon	600 M (max)
Ribbon feed button	○
External interface	RS232
Head pressure	0.2MPa
Power supply	AC200V · 400VA · 50Hz / 60Hz
Operating environment	Temperature: 5°C to 40°C Humidity: less than 90% (no dew condensation)
Option	Item Editing Software (GIE)

■ Print sample



The specification may differ from conditions of use. Specification and other information are subject to change without notice.